



## Town of Hilton Head Island

### Housing Action Committee Meeting

Wednesday, May 14, 2025, 10:00 AM

1 Town Center Court, Hilton Head Island, SC  
Benjamin M. Racusin Council Chambers

---

The meeting can be viewed on the [Town's YouTube Channel](#), the [Beaufort County Channel](#), and Spectrum Channel 1304.

1. **Call to Order**
2. **Adoption of the Agenda**
3. **Approval of the Minutes**
  - a. Regular Meeting Minutes of February 26, 2025
4. **Unfinished Business**
  - a. Program Updates - Quincy White, Chief Housing Officer
  - b. Work Group Updates - Jack Alderman, Housing Action Committee Chair
  - c. Home Safety and Repair Program and Sewer Connection Program Update - Sharonica Stewart
  - d. Consideration of the Housing Displacement Support Plan - Quincy White, Chief Housing Officer
5. **New Business**
6. **Public Comment - Non Agenda Items**
7. **Adjournment**

FOIA Compliance: Public notification of this meeting has been published, posted, and distributed in compliance with the South Carolina Freedom of Information Act and the requirements of the Town of Hilton Head Island.

In accordance with the requirements of Title II of the Americans with Disabilities Act of 1990 ("ADA"), the Town of Hilton Head Island will not discriminate against qualified

individuals with disabilities on the basis of disability in its services, programs, or activities. Auditory accommodations are available. Any person requiring further accommodation should contact the Town of Hilton Head Island ADA Coordinator as soon as possible but no later than 48 hours before the scheduled event.

Municipal Association of South Carolina (MASC) Civility Pledge:  
“I pledge to build a stronger and more prosperous community by advocating for civil engagement, respecting others and their viewpoints, and finding solutions for the betterment of my city or town.”



# Town of Hilton Head Island HOUSING ACTION COMMITTEE MEETING Wednesday, February 26, 2025, 10:00 AM Minutes

## 1. Call to Order

Chair Alderman called the meeting to order at 10:00 am.

## 2. Adoption of the Agenda

Vice-Chair West made a motion to adopt the agenda. Mr. Crawford seconded and the motion was approved unanimously.

## 3. Approval of the Minutes

### a. Regular Meeting Minutes of December 9, 2024

Ms. Gillis made a motion to approve the meeting minutes of December 9, 2024. Vice-Chair West seconded and the motion was approved unanimously.

## 4. Unfinished Business

### a. Program Updates - Quincy White, Chief Housing Officer

Quincy White, Chief Housing Officer, provided updates on upcoming programs and ongoing projects including the Displacement Mitigation Support Plan, Muddy Creek Neighborhood Stabilization Plan, Habitat for Humanity, and other housing initiatives. Mr. White shared that Hilton Head Hospital has announced its intent to build workforce housing on nearly 10 acres of hospital-owned land. Town Staff is working with the hospital's development team on implementation.

### b. Home Safety and Repair Program and Sewer Connection Program Updates - Sharonica Stewart, Principal Planner for Historic Neighborhoods

Sharonica Stewart, Principal Planner for Historic Neighborhoods, provided an update on the Home Safety and Repair and Sewer Connection Programs and their accomplishments to date. The Committee asked questions about how the Town Staff is researching additional funding to support the program.

### c. Work Area Updates - Jack Alderman, Housing Action Committee Chair

Chair Alderman provided high-level updates on the Committee's work groups' ongoing meetings and discussions.

### d. Consideration of Updates to Home Matters: Town of Hilton Head Island Displacement Mitigation Support Plan- Quincy White, Chief Housing Officer

Vice-Chair West made a motion to approve the update to the Displacement Mitigation

Support Plan that highlighted the new structure of community partners to include United Way of the Lowcountry as the fiduciary lead partner and the Community Foundation of the Lowcountry as the fiscal agent as it relates to the Displacement Fund. Mr. Crawford seconded the motion. The motion passed unanimously.

## **5. New Business**

- a.** Overview of Coastal Community Development Corporation Programs and Acquisitions- Alan Wolf, Chairman, Coastal Community Development Corporation

Alan Wolf, Chairman of the Coastal Community Development Corporation, presented to the Committee an update on their organization's progress and presented their next steps regarding their recent property acquisition on Hilton Head Island.

- b.** Approval of Proposed 2025 Meeting Dates

Ms. Varin made a motion to approve the proposed 2025 meeting schedule with the subtraction of the meeting on March 12, 2025, which the Committee agreed to cancel. Ms. Gillis seconded and the motion was approved unanimously.

## **6. Public Comment - Non Agenda Items**

There were no public comments.

## **7. Adjournment**

Chair Alderman adjourned the meeting at 11:03 am.

**The recording of this Meeting can be found on the Town's website at [www.hiltonheadislandsc.gov](http://www.hiltonheadislandsc.gov)**



# TOWN OF HILTON HEAD ISLAND

## *Housing Action Committee*

---

**TO:** Housing Action Committee  
**FROM:** Sharonica Stewart, Principal Planner - Historic Neighborhoods  
**VIA:** Quincy White, Chief Housing Officer  
**VIA:** Shawn Leininger, Assistant Town Manager  
**VIA:** Missy Luick, Planning Director  
**DATE:** May 14, 2025  
**SUBJECT:** Home Safety and Repair Program and Sewer Connection Program Update

---

### **SUMMARY:**

#### **Home Safety and Repair Update:**

Since February, the program has made tremendous progress completing a total of 18 projects, with eight remaining under contract. The program's team remains focused on completing the remaining projects under contract while actively researching funding avenues to ensure the program's sustainability and continued success. While not mandatory, all contractors have been requested to close out active projects by June 30, 2025, to encourage timely completion and reduce the number of carryover projects in the upcoming fiscal year.

#### **Home Safety and Repair Overall Program Impact:**

Since its inception, the Home Safety and Repair Program has played a vital role in improving the safety and structural integrity of homes within the community. The program has provided significant support to homeowners by addressing critical repair needs, ensuring compliance with local building standards, and enhancing overall livability.

#### **Program Data (July 2022 – April 2025):**

- Total Number of Projects Completed: 103
- Total Number of Projects Currently Remaining Under Contract: 8
- Remaining Program Budget: \$81,517.48

#### **Lateral Sewer Connection Program (LSC):**

- Total Number of Projects Completed: 34
- Total Number of Projects Currently Remaining Under Contract: 2
- Remaining Program Budget: \$24,834.00



# TOWN OF HILTON HEAD ISLAND

## *Housing Action Committee*

---

**TO:** Housing Action Committee  
**FROM:** Quincy White, Chief Housing Officer  
**VIA:** Missy Luick, Director of Planning  
**VIA** Shawn Leininger, Assistant Town Manager  
**DATE:** May 14, 2025  
**SUBJECT:** Consideration of the Housing Displacement Mitigation Support Plan

---

### **RECOMMENDATION:**

The Housing Action Committee is requested to review the proposed Housing Displacement Mitigation Support Plan and make a recommendation to the Town Council.

### **SUMMARY:**

Right-Sized Infrastructure is a focus area in the adopted Town Council 2023-2025 Strategic Action Plan. In fulfillment of this focus area, Strategy #2 Implement the Workforce Housing Framework: Finding Home states the Town will:

“Workforce housing affordability has been a growing challenge on Hilton Head Island and this negative trend has been accelerating over the last five years. Without deliberate action to counteract these trends, the Town will continue to lose its valuable share of workforce housing, home-by-home, or family-by-family. The Workforce Housing Framework is a commitment to preserve and expand workforce housing options on Hilton Head Island through the adoption of four (4) foundational pillars: Community, Planning, Management, and Revenue. Collectively, these pillars establish the enabling structure to assign future policy, programs, organizational capacity, resources, and management.”

In this regard, Town Council directed Town Staff to develop and adopt a housing Displacement Mitigation and Support Plan in the 2024 Strategic Action Work Plan.

The Housing Action Committee acted on this directive and voted unanimously (10-0) on December 9, 2024, to recommend adoption of the *Home Matters: Hilton Head Island Displacement Mitigation Support Plan*. The Committee voted again on February 26, 2025, approving updates to the plan by a vote of (7-0) and recommending its adoption to Town Council.

At the Community Services and Public Safety Committee (CSPS) meeting on March 17, 2025, a motion was made to refer the *Home Matters: Hilton Head Island Displacement Mitigation Support Plan* back to the Housing Action Committee for further discussion and clarification on where the plan should reside. In discussing the motion, the Committee recommended that the Voluntary Displacement Mitigation Questionnaire be removed from the plan in its current form and restructured as a template or resource tool for voluntary use. Additionally, the CSPS Committee requested that the Town's role within the Housing Displacement Mitigation Support Plan be refocused and clearly defined.

The Housing Displacement Mitigation Support Plan has been revised to reflect the direction provided by the CSPS Committee and is back before the Housing Action Committee for further review.

These revisions include the following:

1. The Town's role has been clarified to state that, upon receiving information about a displacement event, the Town will notify the Lead Partner, who will then coordinate and lead the targeted response.
2. The voluntary displacement questionnaire has been renamed and refined into a template survey for community partners to use.
3. The plan now includes a clearly defined seven-step Response and Coordination Structure to guide response efforts.
4. The role of the Lead Partner has been clarified to include activating and coordinating the Community Response Team.
5. The plan no longer features Town seals or logos, reflecting a more collaborative, community partner-led initiative.

## **BACKGROUND:**

In response to ongoing housing displacement challenges on Hilton Head Island, the Housing Displacement Mitigation Support Plan (Attachment 1) was developed to connect displaced residents with essential community resources. This plan was created through collaboration with community partners, ensuring its goals and strategies are locally informed and responsive. It outlines a coordinated response that leverages both public and private resources to support residents during times of displacement.

At the heart of the Housing Displacement Mitigation Support Plan is a commitment to a community-driven approach, ensuring that stakeholders work together to create meaningful solutions. This unified strategy enables Hilton Head Island to proactively address displacement challenges and foster a more sustainable future for all residents.

Community stakeholders including the Beaufort County Economic Opportunity Commission, the Lowcountry Council of Governments, and other social service agencies convened to help shape the plan. Through a series of virtual and in-person meetings, they contributed to the development of key strategies, eligibility requirements, and

programmatic support, while also recommending the organizational structure of the Community Response Team.

The Community Response Team plays a central role in implementing the plan, ensuring seamless coordination throughout all stages of a displacement response:

- **Lead Partner:** The Deep Well Project is responsible for activating, coordinating, and overseeing stakeholder efforts. The agency was selected based on its experience managing displacement events and its staff and volunteer capacity.
- **Fiscal Agent:** The Community Foundation of the Lowcountry manages the Hilton Head Island Re-Home Support Fund, overseeing financial stewardship in accordance with donor and regulatory guidelines.
- **Fiduciary Lead Partner:** The United Way of the Lowcountry provides financial oversight and reviews funding requests submitted by the Community Response Team. Approved disbursements are coordinated with the Fiscal Agent and directed to The Deep Well Project or other recognized charitable partners.

The Plan includes a clear response and coordination structure that includes the following steps:

1. **Identification and Notification:** Notification of a potential or active displacement event may come from various sources. Upon receiving credible information, the Deep Well Project can activate the Community Response Team. Additionally, if the Town of Hilton Head Island becomes aware of a displacement event, it will notify The Deep Well Project to initiate an appropriate community response.
2. **Activation of the Community Response Team:** The Deep Well Project mobilizes the Community Response Team, initiating communication and preparing support services for affected residents.
3. **Coordinated Support Services:** The Community Response Team works together to assess resident needs and coordinate services. Core support includes rental assistance, moving aid, temporary lodging, case management, employment support, legal assistance, and financial counseling.
4. **Funding Oversight and Disbursement:**
  - United Way of the Lowcountry is the Fiduciary Lead Partner, reviewing funding requests and ensuring appropriate use.
  - Community Foundation of the Lowcountry acts as the Fiscal Agent, managing the Re-Home Support Fund and disbursing resources in line with approvals.
  - Payments go to The Deep Well Project or other IRS-recognized Community Response Team organizations.
5. **Service Delivery and Ongoing Support:** Community Response Team members deliver tailored support to displaced residents and remain engaged throughout recovery, ensuring alignment with the Plan's goals.

6. **Communication and Coordination:** The Lead Partner maintains open communication among partners and displaced residents, ensuring efforts are aligned and responsive to evolving needs.
7. **Ongoing Coordination & Monitoring:**
  - Lead Partner monitors implementation and coordinates regular updates among partners.
  - The Community Response Team adjusts services based on changing needs and feedback from residents and partners.

To supplement the Plan, a Sample Voluntary Housing Displacement Mitigation Support Survey (Attachment 2) has been developed. This survey is intended to collect information from residents impacted by housing instability or potential displacement and will guide the coordination of appropriate services.

Additionally, a Proposed Town Council Resolution (Attachment 3) is included to support the Town's consideration of the Housing Displacement Mitigation Support Plan and encourage continued collaboration among Town staff, community partners, and service agencies.

#### **RECOMMENDATIONS:**

The Housing Action Committee is requested to review the proposed Housing Displacement Mitigation Support Plan and make a recommendation to the Town Council.

#### **NEXT STEPS:**

If recommended, the Housing Displacement Mitigation Support Plan will continue through the public review process, including review and approval by the Town Council.

#### **ATTACHMENTS:**

1. Housing Displacement Mitigation Support Plan
2. Sample Voluntary Housing Displacement Mitigation Support Survey
3. Proposed Town Council Resolution

# HOUSING DISPLACEMENT MITIGATION SUPPORT PLAN



## **ACKNOWLEDGEMENTS**

The Housing Displacement Mitigation Support Plan is a testament to numerous community organizations' collaborative spirit and dedication. Thank you for the invaluable contributions to addressing housing displacement mitigation challenges on Hilton Head Island.

### **Housing Action Committee**

- Jack Alderman, Chair
- Sandy West, Co-Chair
- Sandy Gillis
- Sarah Jones- Anderson
- Katie Varin
- Dennis Crawford
- Janet Fantano
- Luana Graves-Sellars
- Ayaks Castellanos
- Stuart Bell

### **Community Response Team Lead Partners**

- The Deep Well Project
- Community Foundation of the Lowcountry
- United Way of the Lowcountry

## TABLE OF CONTENTS

<b>Executive Summary</b>	<b>1</b>
<b>Shaping the Plan</b>	<b>2</b>
<b>Roles and Responsibilities</b>	<b>3</b>
<b>Response and Coordination Structure</b>	<b>5</b>
<b>Conclusion</b>	<b>6</b>
<b>Exhibit: Sample Voluntary Housing Displacement Mitigation Support Survey</b>	

## EXECUTIVE SUMMARY

Hilton Head Island faces increasing housing displacement pressures as rising rents and limited housing availability leave vulnerable populations at risk. In some cases, rental costs have surged by as much as 50% from the previous lease term, making it difficult for working families to secure stable housing in a market with low vacancies. Housing displacement risks are further compounded when rental properties are sold for redevelopment.

A recent example is Chimney Cove Village, where in 2022, approximately 300 tenants were at risk of losing their homes due to a proposed redevelopment. Although the redevelopment project did not materialize, Chimney Cove remains a potential redevelopment site, highlighting the need for a plan to support residents facing displacement with access to a web of available community resources.

In response, this Housing Displacement Mitigation Support Plan was developed to connect displaced residents with essential community resources. This Plan was shaped through collaboration with community partners, ensuring its goals and strategies are locally informed and responsive. It outlines a coordinated response, leveraging existing public and private resources to support residents in times of displacement.

At the heart of the Housing Displacement Mitigation Support Plan is a commitment to a community-driven approach, ensuring that stakeholders work together to create a meaningful solution. This unified strategy will help Hilton Head Island proactively address displacement challenges and build a more sustainable future for the entire community.

## SHAPING THE PLAN



In response to the challenges posed by displacement events, this Housing Displacement Mitigation Support Plan is designed to provide essential services and support to displaced residents by leveraging the collaborative efforts of community partners within these organizations' existing eligibility and support functions. Community partners will support residents while utilizing private funding for displacement mitigation efforts in a coordinated, planned approach.

### Community Involvement

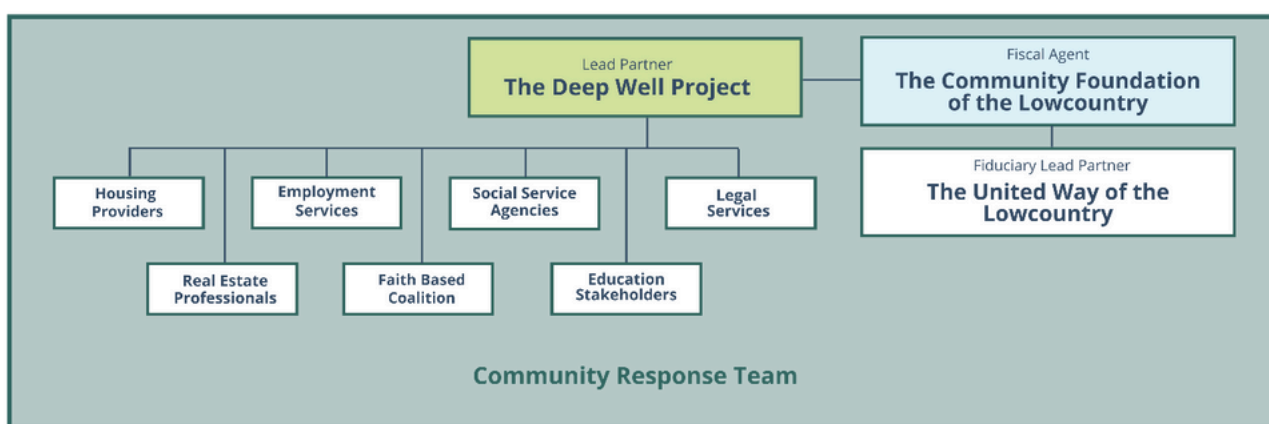
Community stakeholders, including the Beaufort County Economic Opportunity Commission, Lowcountry Council of Governments, and other social service agencies, convened to develop and shape the Housing Displacement Mitigation Support Plan. Through virtual and in-person meetings, stakeholders provided valuable input, helping define key strategies, programmatic support, eligibility requirements, and recommendations to develop the organization roster that makes up the Community Response Team.

Tabletop exercises were conducted to ensure the Plan's effectiveness, testing it against real-world scenarios such as redevelopment, workforce displacement, and large-scale natural disasters. These exercises were essential in identifying potential gaps and refining the Plan for comprehensive, actionable implementation.

## ROLES & RESPONSIBILITIES

The organizational structure for the Housing Displacement Mitigation Support Plan establishes a Community Response Team, which the Lead Partner, the Deep Well Project, leads. The Lead Partner activates and mobilizes necessary resources and support services to manage displacement events. This design aims to streamline communication, resource allocation, and the execution of the Plan. The organizational chart highlights the importance of collaboration and resource sharing among organizations to address displacement issues effectively. Participants also leveraged best practices, community feedback, and their experiences to propose practical solutions for the Plan. When the Town of Hilton Head Island becomes aware of a displacement event, it will notify the Lead Partner.

### Role of the Community Response Team



The Community Response Team works directly with displaced residents, providing essential services and tailored support during displacement events. Collaborating closely with resource partners, the Lead Partner ensures a coordinated response that addresses the unique needs of each household. The Fiscal Agent, the Community Foundation of the Lowcountry, manages the Hilton Head Island Re-Home Support Fund (a privately held fund) and facilitates a platform for monetary donations to support necessary displacement services. At the same time, the Fiduciary Lead Partner, the United Way of the Lowcountry, oversees the allocation of financial resources. The Community Response Team consists of community organizations, government agencies, non-profits, and other relevant entities that provide services and resources such as housing, employment, legal, and financial counseling. The combined expertise of the Community Response Team is harnessed to address each unique displacement event to effectively implement the Housing Displacement Mitigation Support Plan.

Together, the Community Response Team ensures seamless coordination, leveraging diverse sources to assist residents through every stage of displacement recovery. The roles of the Community Response Team are as follows:

- **Lead Partner: The Deep Well Project**

The Deep Well Project will serve as the Lead Partner, responsible for activating, coordinating, and overseeing the collaborative efforts of various stakeholders in addressing displacement challenges. This agency facilitates communication, collaboration, and resource allocation among team members, ensuring alignment with the team's objectives and priorities. The Lead Partner was selected for their extensive experience managing displacement events and existing staff and volunteer capacity.

- **Fiscal Agent: Community Foundation of the Lowcountry**

The Community Foundation of the Lowcountry will serve as the Fiscal Agent, holding and managing the displacement funds within the Hilton Head Island Re-Home Support Fund, a privately held and managed fund. It will oversee financial stewardship, ensuring proper fund management and compliance with donor restrictions and regulatory guidelines.

- **Fiduciary Lead Partner: United Way of the Lowcountry**

The United Way of the Lowcountry will serve as the Fiduciary Lead Partner, providing oversight on expenditures of the Hilton Head Island Re-Home Support Fund to support rental assistance, moving aid, diversion programs, and other essential services for displaced residents. Disbursements from the fund will be directed to The Deep Well Project or other IRS-recognized charitable organizations within the Community Response Team. Funding requests from the Community Response Team will be submitted to the United Way of the Lowcountry. Upon approval, disbursements will be coordinated with the Fiscal Agent, the Community Foundation of the Lowcountry. The United Way of the Lowcountry has demonstrated an ability to provide oversight and distribute funding assets to community organizations, reinforcing its capacity to support urgent community needs effectively.

### **Support Services Offered by the Community Response Team**

The Community Response Team activities may include assessments to understand individual needs, access to temporary lodging, financial assistance, and social services, and facilitating diversion strategies to prevent further displacement. The team collaborates closely with resource partners to ensure a comprehensive and coordinated response tailored to the specific needs of each displaced resident. Some areas of expertise include, but are not limited to, the following:

- Case Management
- Rental Assistance
- Moving Expenses
- Diversion Services
- Employment Service
- Legal Services
- Financial Counseling

## RESPONSE AND COORDINATION STRUCTURE

The structure below provides a step-by-step process for implementing the Housing Displacement Mitigation Support Plan. It begins with the identification and notification of a potential or active displacement event, followed by the activation of the Community Response Team, coordination and delivery of support services, partner communication, and ongoing monitoring.

### 1. Identification and Notification

Notification of a potential or active displacement event may come from various sources. Upon receiving credible information, the Deep Well Project can activate the Community Response Team. Additionally, if the Town of Hilton Head Island becomes aware of a displacement event, it will notify The Deep Well Project to initiate an appropriate community response.

### 2. Activation of the Community Response Team

The Deep Well Project mobilizes the Community Response Team, initiating communication and preparing support services for affected residents.

### 3. Coordinated Support Services

The Community Response Team works together to assess resident needs and coordinate services. Core support includes rental assistance, moving aid, temporary lodging, case management, employment support, legal assistance, and financial counseling.

### 4. Funding Oversight and Disbursement

- **United Way of the Lowcountry** is the Fiduciary Lead Partner, reviewing funding requests and ensuring appropriate use.
- **Community Foundation of the Lowcountry** acts as the Fiscal Agent, managing the Re-Home Support Fund and disbursing resources in line with approvals. Payments go to The Deep Well Project or other IRS-recognized Community Response Team organizations.

### 5. Service Delivery and Ongoing Support

Community Response Team members deliver tailored support to displaced residents and remain engaged throughout recovery, ensuring alignment with the Plan's goals.

### 6. Communication and Coordination

Throughout implementation, the Lead Partner maintains open communication among partners and displaced residents, ensuring efforts are aligned and responsive to evolving needs.

### 7. Ongoing Coordination & Monitoring

- Lead Partner monitors implementation and coordinates regular updates among partners.
- Community Response Team adjusts services based on changing needs and feedback from residents and partners.

## CONCLUSION

The Housing Displacement Mitigation Support Plan is a community-driven effort designed to tackle the issue of residential displacement. Rising housing costs and limited availability create significant challenges for local families. This Plan unites various community partners to provide vital support and solutions. While addressing immediate displacement needs is critical, it is also recognized that long-term housing solutions are necessary.

Central to the Plan's success is its emphasis on coordinating existing community stakeholders, resources, and support services. Through meetings and workshops, stakeholders shared valuable insights, ensuring the strategies developed within the Plan were relevant and practical. This comprehensive approach fosters a sense of connection and commitment to the Plan's objectives.

Key partners have been identified to play critical roles in ensuring the Plan's effective implementation. These partners bring essential expertise, resources, and strong community ties. Each partner will oversee different aspects of the Plan, from coordinating direct services to managing fundraising and mobilizing volunteers.

This structured approach enhances the Plan's operational effectiveness and ensures that assistance reaches those in need swiftly and efficiently. Notably, the Plan is designed to adapt to changing needs and circumstances. It's not just a static response but an ongoing effort to support residents facing housing challenges.

The Housing Displacement Mitigation Support Plan is a proactive and collaborative initiative to build a stronger, more resilient Hilton Head Island. Through shared efforts and a clear structure, the community aspires to ensure that all residents can live securely and prosper despite the challenges posed by the housing market.

## Sample Voluntary Housing Displacement Mitigation Support Survey

This is a voluntary survey for the property owner or authorized representative. You may skip any questions that don't apply. The information provided will only be used to help assess and address potential displacement related to the proposed project.

1. Are there existing tenants in the development?

---

---

---

2. Are the tenants aware of the proposed project?

---

---

---

3. What is the current occupancy rate?

---

---

---

4. How many units (number and type) and tenants (household size) are impacted?

---

---

---

5. What is the average lease length and expiration timeline?

---

---

---

6. What are the current rent ranges, and will these change post-redevelopment?

---

---

---

7. Will the new development maintain the same use (rental, mobile home, ownership)?

---

---

---

8. Will the property include workforce housing? If so, what will the rent ranges be?

---

---

---

9. Would the property owner consider workforce housing if incentives are available?

---

---

---

10. Would tenants be offered the 'first right to return' if they qualify?

---

---

---

11. Do current tenants include school-aged children or Island-based workers?

---

---

---

12. Are bilingual services needed for tenants?

---

---

---

13. Will the owner consider an extended lease termination process?

---

---

---

## TOWN OF HILTON HEAD ISLAND, SOUTH CAROLINA

### A RESOLUTION OF THE TOWN COUNCIL OF THE TOWN OF HILTON HEAD ISLAND, SOUTH CAROLINA, APPROVING THE HOUSING DISPLACEMENT MITIGATION SUPPORT PLAN

**WHEREAS**, the Town Council adopted the Workforce Housing Framework on November 1, 2022, which is a comprehensive approach aimed at equipping Town and community leaders with effective strategies and actionable tactics to meet the growing demand for housing preservation and new construction; and

**WHEREAS**, the Town Council formed the Housing Action Committee on May 16, 2023, with the sole purpose of advising and recommending to the Town various workforce housing strategies for their consideration, adoption, and implementation; and

**WHEREAS**, on March 21, 2024, the Town Council adopted the Town of Hilton Head Island Fiscal Year 2024-2025 Strategic Plan, which included strategic direction on housing initiatives; to include the creation of a Displacement Mitigation Support Plan; and

**WHEREAS**, on December 9, 2024, the Housing Action Committee reviewed and recommended the “Home Matters: Town of Hilton Head Island Displacement Mitigation Support Plan” on a vote of 10-0 to Town Council for consideration of approval; and

**WHEREAS**, on February 26, 2025, the “Home Matters: Town of Hilton Head Island Displacement Mitigation Support Plan” was updated to reflect changes to the structure of lead partners following a recent displacement event, and was subsequently approved by the Housing Action Committee with a unanimous 7-0 vote; and

**WHEREAS**, On March 17, 2025, the Community Services & Public Safety Committee reviewed the "Home Matters: Town of Hilton Head Island Displacement Mitigation Support Plan" and, by a vote of 2-1, declined to recommend it to the Town Council for consideration. The Plan was referred back to the Housing Action Committee for further discussion and clarification regarding where it should formally reside. As part of the motion, the Committee also recommended that the Voluntary Displacement Mitigation Questionnaire be removed from the Plan in its current form and instead restructured as a template or resource tool for voluntary use; and

**WHEREAS**, on May 14, 2025 the Housing Action Committee reviewed and recommended the "Housing Displacement Mitigation Support Plan" to the Town Council for consideration of approval on a vote of x-x; and

**WHEREAS**, the "Housing Displacement Mitigation Support Plan" is a community- driven effort designed to tackle the challenges of residential displacement on Hilton Head Island.

**WHEREAS**, the Town Council for the Town of Hilton Head Island, South Carolina, finds that the adoption of the “Housing Displacement Mitigation Support Plan” is in the best interests of, and promotes the health, safety and general welfare of the Town, and its citizens, residents and property owners.

**NOW, THEREFORE, BE IT, AND HEREBY IT IS, RESOLVED BY THE TOWN COUNCIL FOR THE TOWN OF HILTON HEAD ISLAND, SOUTH CAROLINA:**

1. The "Housing Displacement Mitigation Support Plan" a copy of which is attached hereto as Exhibit "A," is hereby adopted.
2. The Town Manager is authorized to take all actions as he deems appropriate to implement the plan.

**MOVED, APPROVED, AND ADOPTED BY THE COUNCIL FOR THE TOWN OF HILTON HEAD ISLAND ON THIS \_\_\_\_\_ DAY OF \_\_\_\_\_, 2025.**

THE TOWN OF HILTON HEAD ISLAND,  
SOUTH CAROLINA

\_\_\_\_\_  
Alan R. Perry, Mayor

ATTEST:

\_\_\_\_\_  
Kimberly Gammon, Town Clerk

APPROVED AS TO FORM:

\_\_\_\_\_  
Curtis L. Coltrane, Town Attorney

Introduced by Council Member: \_\_\_\_\_